

Features

- Suitable for Class I,II/Div. 1 & 2 for hazardous locations
- Certifications for FM and CSA
- Manifold combines the solenoid valve for purging and needle valve for pressurization in one housing
- Suitable for steel or plastic tubing
- Mounting hardware, pneumatic fittings and tubing included

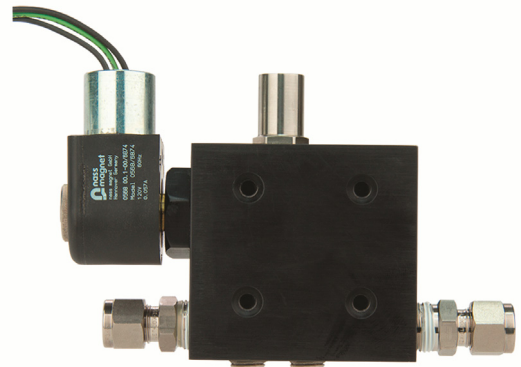
Application

The 5500-MAN-CD01- * combines a solenoid valve for purging and a needle valve for pressurization in one manifold design. When the valve is energized, the solenoid valve opens and allows for a high flow of protective gas into the enclosure. When the valve is de-energized, the flow through the internal needle valve is adjustable by a flathead screw driver through the needle stem located on the manifold. The solenoid valve is used for purging, leakage compensation, and temperature control by signals from user defined points on the 5500 control unit.

Mounting hardware includes 3/8" tube compression fittings mounted on the manifold for input and output flow, 3/8" tube compression bulkhead fitting for getting flow into the enclosure and certified sealing washers with bolts to mount the manifold to the enclosure. Also included is 1 meter of 3/8" poly tubing with 3/8" poly tube stiffener inserts which allows the connection of plastic tubing to compression fittings without collapsing the tubing.

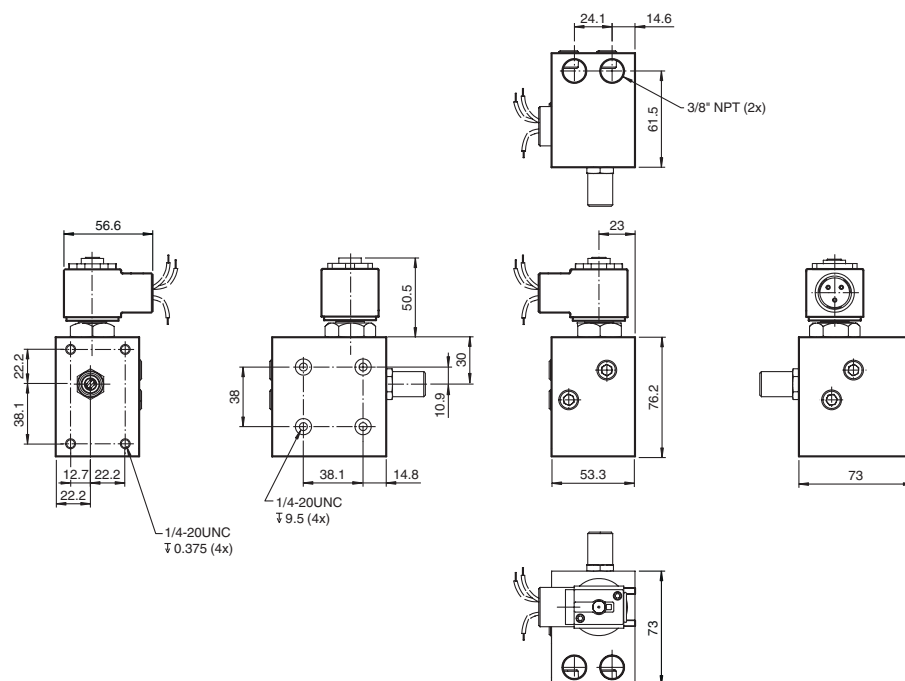
The 5500 valve system works with the 5500 control unit and EPV-5500 vents. The 5500 Series system has FM and CSA certification for Class/Division installation, see model number key for proper manifold selection.

For ATEX and IECEx applications look the model number key proper manifold selection.



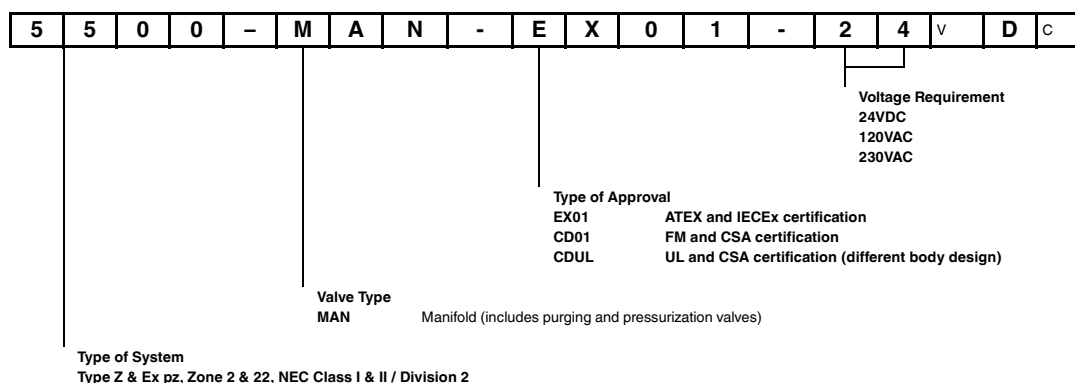
BEBCO EPS®

Dimensions



| | |
|----------------------------------|---|
| Electrical specifications | |
| Fuse rating | DC: 500 mA AC: 80 mA (fuse rating on 5500 control unit) |
| Pneumatic parameters | |
| Protective gas supply | instrument grade air or inert gas |
| Pressure requirement | 1.4 bar (20 psi) to 8.2 bar (120 psi) |
| Purge flow rate | solenoid valve : Cv (flow coefficient) = 1.4 needle valve : Cv (flow coefficient) = 0.25 |
| Ambient conditions | |
| Ambient temperature | -20 ... 60 °C (-4 ... 140 °F) |
| Mechanical specifications | |
| Connection type | Pneumatic Input port: 3/8" Tube compression fitting Output port: 3/8" Tube compression fitting Electrical connection ½" NPTF thread connection w/ 24" (0.61m) flying leads |
| Degree of protection | type 7 & 9 |
| Material | Housing: anodized aluminum 3/8" compression fittings: 316 stainless steel Pressure ports: 3/8" NPTF Bulkhead fitting: 316 stainless steel Mounting bolts: 1/4 - 20, 316 stainless steel Sealing washers: UL recognized type 4X |
| Mass | 1250 g (2.8 lb) |
| Dimensions | see dimensions |
| International approvals | |
| FM approval | FM3006713 Explosion proof: Class I, Division 1, Group A-D, T4, Ta = 60C DIP: Class II, Division 1, Groups F+G, T4, Ta = 60C Nonincendive: Class I, Division 2, Groups A-D, T4, Ta = 60C Suitable for Class II, Division 2, Groups F+G, T4, Ta = 60C |
| CSA approval | CSA 202633 Class I, Division 1, Groups A-D: Class II, Groups E,F,G Class I, Division 2, Groups A-D |

Type code/model number



Release date 2014-10-27 12:14 Date of issue 2014-10-27 t169984_eng.xml

Refer to "General Notes Relating to Pepperl+Fuchs Product Information".